



# THE BUZZzzzz



## Editors Notes

## News from the Apiary

## Seasonal Beekeeping Tips

## Member Contributions

## Events & Notices

### CSBKA COMMITTEE

Melvyn Essen (President 07811 070294)  
[president@centralsussexbeekeepers.org.uk](mailto:president@centralsussexbeekeepers.org.uk)

Simon Randall (Chairperson)  
[chair@centralsussexbeekeepers.org.uk](mailto:chair@centralsussexbeekeepers.org.uk)

Bob Williams (Hon Treasurer)  
[treasurer@centralsussexbeekeepers.org.uk](mailto:treasurer@centralsussexbeekeepers.org.uk)

Fiona Canty/Elaine Allen (Hon Secretaries)  
[secretary@centralsussexbeekeepers.org.uk](mailto:secretary@centralsussexbeekeepers.org.uk)

Pip Edgcombe (Membership Secretary)  
[membership@centralsussexbeekeepers.org.uk](mailto:membership@centralsussexbeekeepers.org.uk)

Matt & Glynnis Arbuthnot  
(Marketing & Fundraising)  
[extractors@centralsussexbeekeepers.org.uk](mailto:extractors@centralsussexbeekeepers.org.uk)

Carl Slade (Apiary Coordinator)  
[apiary@centralsussexbeekeepers.org.uk](mailto:apiary@centralsussexbeekeepers.org.uk)

Pip Edgcombe (Events/Show Co-Ordinator)  
[membership@centralsussexbeekeepers.org.uk](mailto:membership@centralsussexbeekeepers.org.uk)

Yolanda Noye (Newsletter Editor)  
[buzz@centralsussexbeekeepers.org.uk](mailto:buzz@centralsussexbeekeepers.org.uk)

Viv Sallows (Convention Coordinator)  
[convention@centralsussexbeekeepers.org.uk](mailto:convention@centralsussexbeekeepers.org.uk)

Simon Randall (Website Coordinator)  
[website@centralsussexbeekeepers.org.uk](mailto:website@centralsussexbeekeepers.org.uk)



## Welcome to October 2025 CSBKA Newsletter!

Our apiary sessions have now ended following our annual Clean-Up Party and BBQ – thank you to everyone who came along and helped! We'll be holding another Work Party in the New Year to tackle a few more projects, and we'll let you know the date in due course. Last year we successfully re-routed the pathway from the car park to the apiary, which will soon be getting another layer of bark chippings, along with other projects the Apiary Team have planned for us all to get involved in!

Next week we begin our **Winter Meetings**, kicking off with a presentation from **Professor Tom Seeley** "How a Honeybee Swarm chooses its home" – many of you have already registered to attend, and I'm looking forward to seeing you there.

Finally, if you haven't already, please take a few minutes to complete the online survey linked below to provide the Committee and Apiary Team with valuable feedback on your membership/apiary experience:

👉 <https://forms.gle/yPnRQeXfv5FyvonnB7>

Yolanda Noye



## NEWS FROM THE APIARY – Carl Slade



What an amazing year we've had at our Apiary! We began the year with our new path and fence, and we've also added lighting to our sheds, making everything more functional and welcoming. Over the winter, we'll be revamping the main shed, and we hope some of you will join in to help.

We have had some amazing new beginners, and it's been wonderful to see them getting their heads around all the different ways of beekeeping and making such fantastic progress.

Melvyn successfully ran an initiative raising queens through Miller Frame and grafting demonstrations, with some members now taking those colonies through the winter. We've created splits from our strongest hives and are heading into winter with a full, thriving Apiary. Only Hive 4 gave us a challenge when it went rogue, but we managed to calm it down with some decisive drastic action.

Our new Top Bar hive is doing well, and since we haven't harvested from it, it's heading into winter with plenty of stores - fingers crossed for a healthy spring. I'm looking forward to checking in on them when the new season begins.

The Apiary team has put together an amazing list of Winter Talks, I will enjoy sitting in on those.

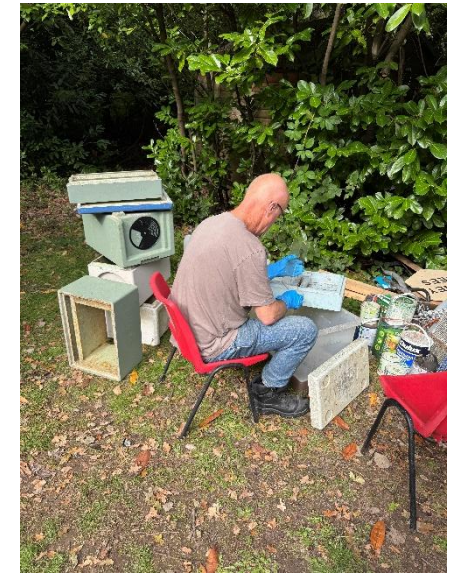
I want to take a moment and say thank you all for your help and support along the way. Our bee club is what it is because of all our amazing members and I'm looking forward to seeing you all at our AGM in March for a lovely social get-together.

Finally, I'm delighted to announce that Elton, Ian, David, Vicki, and Emma have been invited to join our Apiary team as we continue to build from strength to strength. We have lots of amazing Apiary talks planned for next year, some familiar and some that will be new, and I hope to see many of you joining us in our beautiful bee community on a Saturday morning.

I hope you all have exciting plans in motion that you are working on to ready your bees for a fantastic new season of beekeeping next spring!











## Winter Programme – Yolanda Noye



Our Winter Meetings will commence on **Thursday 6<sup>th</sup> November** at the Millenium Hall, Crawley Road, Roffey, Horsham, RH12 4DT. The talk will commence at 7:30pm but the Cowdray Room will be available from 7:00pm for those that want to get settled into their seating and catch up with other members. Light refreshments will be served.

### **Thursday 6th November 2025: Professor Tom Seeley “How a honeybee swarm chooses its home”**



Now retired, Dr Thomas D Seeley served as the Horace White Professor in Biology at Cornell University, within the Department of Neurobiology and Behaviour. His teaching focused on animal behaviour completed by this research into the complex social dynamics and behaviours of honeybees. His work is summarized in many books: *Honeybee Ecology* (1985), *The Wisdom of the Hive* (1995), and *Honeybee Democracy* (2010), *Following the Wild Bees* (2016), *The Lives of Bees* (2019) and *Piping Hot Bees and Boisterous Buzz Runners* (2024).

### **Thursday 4th December 2025: James Donaldson**



James has been a beekeeper since 2005. He qualified as a Master Beekeeper in 2021 and holds the Microscopy certificate. He is heavily involved in teaching beginners with his local association and also teaches for the BBKA. James speaks regularly at local BKA meetings and county conventions and last year delivered a lecture at the National Honey Show.

### **Thursday 8th January 2026: Dr Stefan Stangaciu**



**Dr Stefan Stangaciu**, President of the Romanian Apitherapy Society, is a medical doctor specialising in preventive medicine and natural therapies with a focus on bee products. He serves as Secretary General of the International Federation of Apitherapy. An active promoter of apitherapy worldwide, he has spoken at over 100 conferences in more than 50 countries and founded multilingual Apitherapy Networks as well as Apitherapy.com. His publications include *Soft Healing Through Bee Products*, *Gentle Healing with Honey*,

### **Thursday 5th February 2025: Steve Riley**



Steve is the author of *The Honey Bee Solution to Varroa* and a member of the “Path to Varroa-resistance in the UK” team, led by Emeritus Professor Stephen Martin. This team launched an educational science website, [www.varroaresistant.uk](http://www.varroaresistant.uk), in April 2023. Currently, Steve serves as Chair and Education Officer of Westerham Beekeepers, who are well on their way of searching for and identifying Varroa-resistant honey bees.



## SEASONAL BEEKEEPING TIPS – Melvyn Essen



### October in the Apiary: Preparing your colonies for winter

By now, regular inspections will have ended and varroa treatments completed. Our priority is to ensure that each colony has sufficient stores to sustain them through the winter. Bees may still be foraging on Himalayan balsam and ivy, weather permitting, which can provide some additional reserves.

### Varroa Treatment

Any remnants from varroa treatments need to be removed from the hives. Strips impregnated with chemicals must be taken out according to the manufacturer's instructions. Leaving them in the colony beyond the recommended period can expose mites to a continuous low dose, which encourages the development of resistance.

### Feeding

Feeding should also be completed this month. If you are providing a sugar-and-water syrup, the bees need to ripen it by reducing the water content. This requires considerable effort and warm conditions to allow proper evaporation. If you prepare your own syrup, ensure feeding is finished while the weather is still mild enough for the bees to ripen it. Unripened stores can ferment in the combs, leading to dysentery in the colony.

If you are using a manufactured bee feed, it can be given slightly later in the season, as it is already in a form the bees can digest. In all cases, aim to finish feeding by the end of October. A cold snap in November will cause the bees to cluster and ignore feeders, potentially leaving colonies with insufficient stores to survive the winter.

### Hive Preparation

Now is the time to remove queen excluders, especially if you are overwintering on brood-and-a-half or double-brood configurations. During winter, the bee cluster will gradually move through the boxes to access stores, so it is essential that the queen can follow the cluster. It would be disastrous if she became trapped away from the bees. While the excluder is out, take the opportunity to clean it and remove any brace comb in preparation for next spring.



## 365 DAYS OF BEES – Yolanda Noye



### NOVEMBER

Winter-flowering honeysuckle (*Lonicera x purpusii* “Winter Beauty”) is a medium sized semi-evergreen shrub at its prime in November, smothered in long-lasting, sweetly fragrant blooms. The two-lipped flowers with protruding stamens are accessible to most bees including the common carder bumblebee (*Bombus pascuorum*) which can be active into November.



*Lonicera x purpusii* “Winter Beauty”



*Bombus pascuorum*

### DECEMBER

Mahonia (*Mahonia japonica*) with its holly-shaped pinnate leaves and clusters of vibrant yellow flowers, these evergreen shrubs aren't fussy about their growing conditions and offer a welcome snack to bees roused into activity on warmer winter days. The buff-tailed bumblebee (*Bombus terrestris*) is most likely to take advantage of this festive feast because, at least in southern UK cities, this species is becoming active over winter. New nests are being set up in October/November with a supply of fuel now needed by workers all winter.



*Mahonia japonica*



*Bombus terrestris*





## YELLOW LEGGED HORNET – Yolanda Noye



The following is the latest update from BeeBase as at 24 10 2025.

**527** credible yellow-legged hornet sightings have been reported in the UK in 2025.

**156** nests have been found.

To view the location of destroyed nests, please visit the [map page](#) and choose the Asian Hornet map layer using the 'Layer' icon in the top right hand corner of the map.

For more information visit: [Yellow Legged Hornet 2025 Rolling Update](#)

If you spot a Yellow-Legged Asian Hornet or a nest, please report it immediately via the Asian Hornet Watch App.

### See it! Snap it! Send it!

### Think you've seen an Asian Hornet? Report it!



Report through the Asian Hornet Watch app or [www.bit.ly/asianhornetreport](http://www.bit.ly/asianhornetreport)



'Courtesy The Animal and Plant Health Agency (APHA), Crown Copyright'.

## The life cycle of the Yellow-legged Hornet

### Spring

After hibernating over winter, the queen will emerge and seek out a sweet, carbohydrate-rich food source, in order to build up energy to commence building a small embryonic nest, called a primary nest. During construction of the nest, she is alone and vulnerable, but she will begin laying eggs to produce the future workforce. As the colony and nest size increases, a larger nest is either established around the embryonic nest or they relocate and build elsewhere; this is called the secondary nest.

### Summer

During the summer, a single yellow-legged hornet colony can produce an average of 6000 individuals in one season. From July onwards, yellow-legged hornet predation on honeybee colonies will begin and increase until the end of November. Hornets predating on hives will be seen hovering outside a hive entrance, waiting for returning foragers. This is a characteristic hornet “hawking” behaviour. When they catch a returning bee, they will remove the wings, head and abdomen, and return to the nest with the protein rich thorax to feed the brood. The developing larvae are fed a protein-rich diet consisting of insects or other protein sources scavenged by the workers.

### Autumn

During autumn, the nest activities shift from foraging and nest expansion to reproduction. In France, it was found that nests may produce up to 350 gynes (future queens) and three times as many male hornets. After the mating period, the newly fertilised queens will leave the nest and find somewhere suitable to over-winter. The old queen will die, leaving the nest to dwindle and die off. Of the gynes released by the nest, only a small number will successfully mate and survive the winter. The following spring, the founding queen will begin building her new colony and the process begins again.







# EVENTS



## Upcoming Events!

Below are some dates for your diary.

This list will be updated monthly, so be sure to check back for updates and latest details.

### November

6<sup>th</sup> **CSBKA** Winter Meeting – Professor Tom Seeley (7:30pm Millenium Hall, Roffey, RH12 4DT)

### December

4<sup>th</sup> **CSBKA** Winter Meeting – James Donaldson (7:30pm Millenium Hall, Roffey, RH12 4DT)

### January

8<sup>th</sup> **CSBKA** Winter Meeting – Dr Stefan Stangaciu (7:30pm Millenium Hall, Roffey, RH12 4DT)

### February

5<sup>th</sup> **CSBKA** Winter Meeting – Steve Riley (7:30pm Millenium Hall, Roffey, RH12 4DT)

28<sup>th</sup> West Sussex BKA Annual Convention (9am – 4pm @ Lodge Hill Centre, Pulborough)

### March

12<sup>th</sup> **CSBKA** AGM, Social and Prize Giving (7:30pm Millenium Hall, Roffey, RH12 4DT)

28<sup>th</sup> **CSBKA** 2026 Beekeeping Course for Beginners (Day 1) (10am – 3pm MacNaughton Hall, Pease Pottage, RH11 9AH)

### April

11<sup>th</sup> **CSBKA** 2026 Beekeeping Course for Beginners (Day 2) (10am – 3pm MacNaughton Hall, Pease Pottage, RH11 9AH)

25<sup>th</sup> WSBKA 50<sup>th</sup> Annual Bee Market & Auction/CSBKA Cake Stall