

THE BUZZ

CENTRAL SUSSEX BEEKEEPERS ASSOCIATION

CHARITY 1051548

INSIDE THIS ISSUE

Editors Notes

News from the Apiary

Tips of the Month

Winter Meeting Report

Events & Notices

Resources

CSBKA COMMITTEE

Following our recent AGM the Committee information will be updated and announced next month.

Melvyn Essen (Vice President 07811 070294)

Chairperson (Vacancy)

Elaine Allen (Secretary)
secretary@centralsussexbka.org.uk

Margaret Dodman (Treasurer)
treasurer@centralsussexbka.org.uk

Pip Edgcombe (Membership Secretary)
membership@centralsussexbka.org.uk

Ade Belcham (Apiary Coordinator)

Matt & Glynnis Arbuthnot
(Marketing & Fundraising)

Otto Somodi (Website Coordinator)
webmaster@centralsussexbka.org.uk

Viv Sallows (Convention Coordinator)

Yolanda Noye (Newsletter Editor 07775 841535)
newsletter@centralsussexbka.org.uk

Piers Pollard



Welcome to the March 2022 Edition of The Buzz.

Firstly, a big welcome to Tim, Fiona, Catherine, Steve, James, Rachel, Mark, Nigel, Charlotte, Richard, Jo, Ben, Simone, Sue, Sara, Phil, Beverley, Elizabeth, Gail, Paul, Samantha, Jamie, Alex and Vic who have all joined the 2022 Beginners Course! We look forward to meeting you face to face on 9th April when the Training Apiary opens for all members.

If you attended the AGM and/or missed the recent NBU Question Time on 15th March – “A Hive Autopsy” you can find the presentation by Avril Earl here <https://youtu.be/vUZnW9nOGPc>

Finally, a reminder that the West Sussex BKA Annual Bee Market & Auction is going ahead this year on Saturday 23rd April at Brinsbury Campus, Pulborough – this is an excellent opportunity to purchase bee equipment and to mingle with likeminded “bee people ☺” – I have included the programme and Entry Form within this newsletter. The Auction catalogue will be available online to download after 20th April at www.westsussexbeekeepers.org.uk/auction.html

Yolanda Noye



NEWS FROM THE APIARY – Ade Belcham

Things are beginning to stir at the training apiary. On kinder days there is increased forager traffic with snowdrop and hazel pollen beginning to appear on busy legs. We'll continue to heft the hives to gauge for stores, especially while the weather remains so unsettled.

The 2022 beginners course began on the 1st March on Zoom - **Saturday morning meetings at the apiary will restart on 9th April**. We are running a scheduled programme this year so you can see what themes are planned for the week. Of course, you are always welcome to bring your own questions for Melvyn and the Apiary Team, but the programme will help ensure we cover key topics useful to both beginners and more experienced beekeepers. The programme is likely to be shuffled during the season but here is our starting plan. Updates will be posted to the website so check there for the most up to date version.

Mandatory Covid restrictions have now been lifted but we have decided to run with the following for the foreseeable future.

- No need to book - just come along.
- Please bring and wear your own clean bee suit. Gloves will be provided.
- To protect more vulnerable members of the club, please do a LFT before you come and only come if negative and symptom free.
- Please complete registration form on arrival and contact csbkamembership@gmail.com if you subsequently develop symptoms.

Looking forward to seeing you at the apiary very soon.



Picture taken 16 03 22

2022 CSBKA Apiary Programme

The idea of this programme is to allow members to see what is planned each week for inclusion at the training apiary. Of course we'll still be managing the apiary colonies too so the normal format will be a short presentation / demonstration on the themed topic followed by Q&A and then the colony inspections and tasks as needed..

Everyone is welcome at any session (COVID willing), but to give an idea of the level of beekeeping experience that each session is geared towards, they are colour coded.

geared towards beginners
geared towards established beekeepers
suitable for beginners and established beekeepers

2-Apr	Apiary Team Meeting
5-Apr	On-Line Theory Course finishes
	Apiary open to all
9-Apr	Hive Inspections – when, what, how
16-Apr	Choosing your hive and location; Supering expanding colonies
23-Apr	Frame Management - including frame cycling, castellations and Bailey Comb Change
30-Apr	Swarm Management Part 1 – Proactive measures
07-May	Swarm Management Part 2 – Reactive measures (Melvyn's Method)
14-May	Swarm Management Part 3 – Reactive measures (Wally's Way)
21-May	Making increase – selection, splits and swarms
28-May	Shook Swarm for Varroa control
04-Jun	Collecting and hiving a swarm
11-Jun	Catching and marking queens (incl drone practice)
18-Jun	Spring Honey Harvest & the June Gap
25-Jun	Managing nucleus colonies
02-Jul	Preparing for the main flow
09-Jul	Requeening a queenless colony
16-Jul	Treatment free/low intervention beekeeping
23-Jul	Disease spotting and hygiene strategies
30-Jul	Honey harvesting
06-Aug	Varroa treatment using MAQs
13-Aug	Feeding bees
20-Aug	Selling Honey – rules and options
27-Aug	Preparing for Winter Part 1 – Full colonies
03-Sep	Preparing for Winter Part 2 – Nucleus colonies
10-Sep	Storing Equipment – stores, drawn comb, supers etc
17-Sep	Top Bar Hives – the pros and cons
24-Sep	Propolis – its use in and out of the hive; Apiary clean-up
01-Oct	Apiary Clean-Up and end of season BBQ

Info for visitors to the Apiary

No need to book - just come along.

Please bring and wear your own clean bee suit. Gloves will be provided.

To protect more vulnerable members of the club, please do a LFT before you come and only come if negative and symptom-free.

Please complete registration form on arrival and contact csbkamembership@gmail.com if you subsequently develop symptoms.

PARKING AND ACCESS TO THE APIARY

For those returning to the Apiary it will be immediately noticeable that our previous route of access no longer exists!

Cottesmore School/Golf Club are introducing a sustainability smallholding, to be worked and run by the teachers and pupils of the school. The Apiary will remain screened from the lane with a good natural buffer between us and the new initiative. It currently looks a little startling when you arrive, very much work in progress, but I can assure you our little bee haven remains unchanged and hidden away.

Please now park in the Swimming Pool Car Park and access the Apiary by exiting the far end of the Car Park and walking over the rough ground (its muddy!) until you pick up your bearings. Our CSBKA board will be displayed, and Apiary Team members will be around to show you the “new” way. Failing that just follow the smell of the smokers and the sound of gentle laughter!

The old parking area will still be available for any overflow, you will just need to walk back up the lane to the Swimming Pool Car Park and make your way to the Apiary as directed above.





TIPS OF THE MONTH – Melvyn Essen

Continue to check that your colonies have enough stores while the queen increases egg laying, colonies can safely go through the winter and run out of food Feb/March, if you suspect that one of yours is starving put some fondant directly above the bees under the crown board.

If you placed supers under the brood box in the autumn, it's a good idea to take them out but only during a mild day. Use cover cloths to keep disturbance to a minimum and if you have a clean floor use it now. Here is a brief step by step guide:

- With a spare stand ready, break the seal before lifting the brood box off the super on to the spare stand
- Immediately place cover cloth on the super if there are bees in it
- Move super onto upturned roof
- Replace floor
- Make sure entrance block is in the right position
- Quickly put brood box/floor back on the original stand
- If there are bees in the super, cover the brood box and check the super for the queen.
- If the colony is large and the weather is mild you can pop the Queen Excluder (Q/E) on or put a crown board (feed hole open) on top of the Q/E for a while until the weather picks up.
- If the colony is smaller leave the super off. Do not go through the colony at this stage.

If your colony is very small and in danger of not being able to maintain a good brood temperature consider putting them in a nuc for a while, they will thank you for it by building up, rather than a long-drawn-out build-up and could stress the colony giving rise to disease.

If you have successfully taken nucs through the winter, if they are in a poly nuc they can build up very quickly so consider putting on a brood extension with drawn frames.

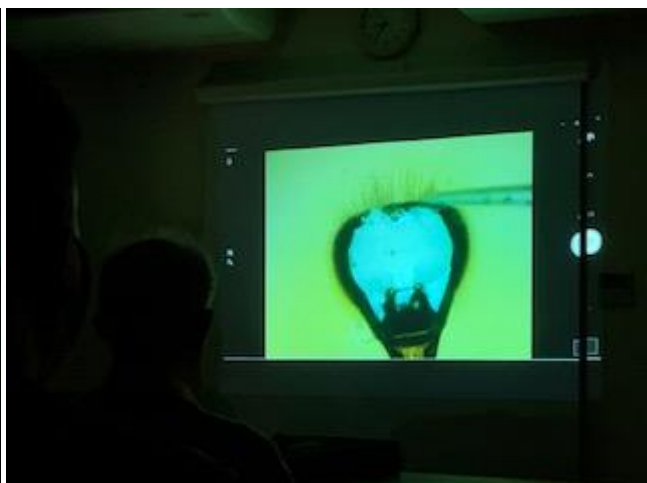
Please refrain from going through colonies just to have a look, you could squish the queen and then there is no way back for them.

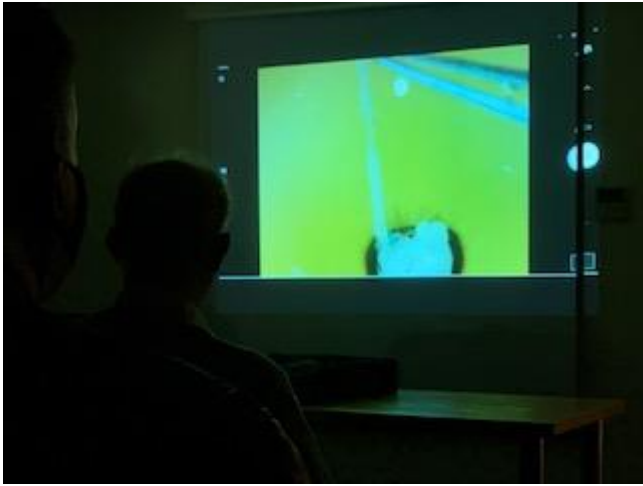
If your hives blew over in the recent wind then consider moving them, bees don't like being in an exposed position, they wouldn't choose to be there and they are likely to be temperamental all the time.



JANUARY WINTER MEETING – Yolanda Noye

We had a good turnout for the January Winter Meeting – “Microscopy on the head of a bee” which was delivered by James Donaldson, Master Beekeeper. James was extremely informative and during his presentation calmly performed a live dissection of a bee’s head giving us an opportunity at the end of the evening to look through the microscope ourselves. We were able to see in detail the compound eyes, antenna (the uppermost segment of which is called the flagellum and consists of 10 smaller segments) the mandibles and parts of the proboscis. *** *Graphic detail warning!* *** James was also able to peel back the “face” of the bee to reveal and extract the hypopharyngeal gland which contributes to the production of the royal jelly fed to queens and larvae. It was a fascinating and excellent presentation. Below are a few photographs from the evening.







EVENTS

WEST SUSSEX BEEKEEPERS' ASSOCIATION

ANNUAL BEE MARKET & AUCTION

A Beekeeping Auction is held annually in the Spring and has a reputation for being a major event in the beekeeping calendar. In the past there have been visitors from all over the country, with many buyers and sellers returning year after year.

This year the Auction will take place at:

Brinsbury Campus, Pulborough

on

Saturday 23rd April

The Auction catalogue will be published here <https://www.westsussexbeekeepers.org.uk/auction.html> on or after 20th April.



The West Sussex BKA Bee Market & Auction

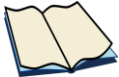
In attendance:



Limited refreshments will be on sale throughout the day. Also available will be a garden plant stall so stock up for the growing season.



Chichester Beekeepers have a library table selling a variety of not-so-new beekeeping books.



The Auction catalogue will be available online at www.westsussexbeekeepers.org.uk/auction.html after 20th April or at the event at a charge of 50 pence.

Note*:

Dogs are welcome on Campus, but owners must comply with the following rules set by Chichester College:

- Must be vaccinated
- Leashed at all times
- Accompanied on Campus at all times
- Kept away from the Animal Centre and all animal husbandry areas
- Must not enter any buildings
- Waste must be cleared away

The West Sussex Beekeepers' Association expresses thanks to the Principal and Staff of the Brinsbury Campus for their assistance.

www.westsussexbeekeepers.org.uk

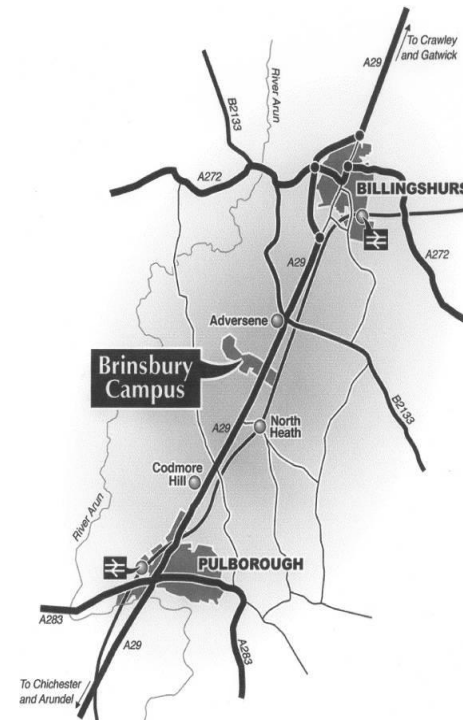


WEST SUSSEX BEEKEEPERS' ASSOCIATION 46th BEE MARKET & AUCTION

SATURDAY 23rd APRIL 2022

At
Chichester College – Brinsbury Campus, North Heath, Pulborough, RH20 1DL

Acceptance of lots 08:30am – 10:30am. Auction commences 12:30pm.



Free Admission and Car Parking
Dogs are welcome on Campus but please see Note*

Auction Rules & Guidance

Advice to Buyers

1. **Bidding will be by a numbered paddle for which a refundable £1 deposit will be charged. If you intend to bid in the auction please register at the event with the Registration Desk to obtain a bidding number prior to the Sale.**
2. Vendors retain ownership until the fall of the hammer when the lot becomes the responsibility of the successful bidder. WSBKA does not accept liability for any loss.
3. In the event of a disagreement the lot may be put up for sale again at the sole discretion of the auctioneers.
4. **Payment is by credit card (preferred) or cash.** We would prefer payment by credit card for items purchased at the Sale. However, cheques are accepted in exceptional circumstances at the discretion of the Treasurer, but will normally be accepted only from buyers known to a present officer of their Division's Committee or member of the WSBKA Executive Committee, and with adequate and appropriate ID. Authorisation to pay by cheque must be agreed with the Treasurer before bidding at the auction. Cash is also acceptable.
5. No lot shall be removed from the sales ring without first obtaining a payment receipt from the Accounting Team. This must be given to a steward who will check the receipt before releasing the goods.
6. It is recommended that all second-hand equipment is sterilised before use.

Advice to Sellers

1. The organisers reserve the right to limit the number of lots to the first 300 accepted for sale and will be on a first come first served basis.
2. Entry Forms should be received by **13th April** and will be acknowledged by email only. Please ensure you receive an acknowledgement. Entry will be free of charge.
3. Should any entries be accepted after this date they will incur a charge of 50p per lot and may not appear in the catalogue. Late entries will only be accepted if space permits and at the discretion of the organisers.
4. Equipment for sale, which must have been previously registered, will be accepted only between 8:30am and 10:30am on the day of the sale.
5. **All items for sale must be of reasonable and saleable quality.** The booking-in stewards and/or auctioneers have the right to refuse entries they consider to be unsaleable.
6. To avoid possible disease spread no drawn comb will be accepted for sale unless offered for sale with live bees. Should any be delivered it will be removed from the site for collection by the vendor.
7. Bees for sale will be delivered between 8:30am and 10:30am (unless a prior alternative arrangement has been made with the auctioneer, Mr. Roger Patterson on tel. 01403 790637 - **ensure you get a response.** No bees are to be placed or opened without permission.
8. **All live bees offered for sale must have been inspected by a Bee Inspector between 9th & 22nd April 2022. Bees that have not been inspected will be refused entry. All inspected frames will be marked by the Bee Inspector.**
9. Sellers of bees should fix a card inside the nuc. box or hive giving the following details:-
 - o Vendor's name, address and telephone number

- o Indication if the nuc. box or hive is to be sold with the bees and if not, stating the deposit required.
 - o If there is no indication to the contrary it will be assumed the hive/nuc. box will be sold with the bees.
10. It is the vendor's responsibility to indicate on the Entry Form and notify the booking-in steward if they wish to place a reserve on an entry. Every effort will be made to ensure that this will be the minimum hammer price.
 11. If the auctioneers or other officials give advice regarding the expected selling price or reserve this will be given in good faith based on previous sales. However, prices can fluctuate for a number of reasons and the final decisions must be with the vendor.
 12. **Payment to vendors will be via bank transfer only.** Bank details to be entered on the Entry Form. Confirmation of Lot Numbers and payment will be via email only – or by letter if SAEs are enclosed with the Entry Form.
 13. **A sales commission of 10% will be charged to the vendor.**
 14. Vendors entering items for sale will be deemed to have accepted the Rules of the Auction.

General Advice

1. The organisers reserve the right to alter the contents of any lot or where it is placed in the catalogue if they feel it may be beneficial to vendor or purchaser.
2. The auctioneers will inspect the bees at approx. 11:00am. Please bring protective clothing so that you can observe the bees at first hand and hear the auctioneers' comments. Please listen out for announcements.
3. For the sale/purchase of nuclei see the BBKA leaflet L014 for guidance.
4. A catalogue of sale lots will be compiled from Entry Forms received by **13th April**.
5. Every care will be taken to describe the lots accurately in the catalogue, but all lots are sold as viewed and no responsibility can be accepted by WSBKA or any member for any error, mistake or omission made in connection with the catalogue or the Auction sale.
6. **All items sold or unsold must be removed by 6pm at the latest or they will be disposed of by the stewards. Collection of bees will be after the bees have stopped flying for the day.**
7. Neither the WSBKA Organising Committee, nor the employees of Brinsbury Campus, shall be liable for any loss or damage to any sellers' or buyers' property, unless it is attributable to the negligence or other failure to perform its obligations in connection with the Auction or under general law.
8. Personal data will be protected as per our GDPR Privacy Notice, a copy of which is available on request or can be viewed at: www.westsussexbeekeepers.org.uk/divisions.html

Items eligible for sale in the Auction will include:

- o Bees, beekeeping equipment and related items
- o Gardening tools and apiary maintenance equipment

Time-Table

8:30am – 10:30am	Delivery of all registered auction lots
11:00am Approx.	Inspection of bees
12:30pm	Auction commences

For further information contact Graham Elliott Tel: 01403 752493 Mobile 07761 349281 or email secretary@westsussexbeekeepers.org.uk

WEST SUSSEX BKA BEE MARKET & AUCTION

BRINSBURY CAMPUS, PULBOROUGH

SATURDAY 23rd April 2022



ENTRY FORM

Closing date for entries 13th April (or earlier if capacity reached)

Please return form to Graham Elliott, Robins Croft, Chalk Road,
Ifold, Loxwood, Billingshurst, West Sussex RH14 0UB
or email: secretary@westsussexbeekeepers.org.uk

I wish to enter the following for sale in the above auction and confirm my acceptance of the rules stated.

Quantity	Description	Official Use

We reserve the right to amend Lots.

Confirmation and Lot Numbers will be advised on email only.

Name:

Address:

Post Code:

Email:

Telephone:

Bank Details – Sort Code:

Acct No:

Acct Name:

Please continue on additional sheets as necessary.
Payment will be to your nominated bank account only.

A regular feature of the Auction is the **PLANT STALL** organized this year by Sue Cooper. There is usually a wide range of plants available, and these come from a variety of donated sources. So, when you are taking cuttings, dividing plants, or transplanting seedlings, please remember the stall and keep some spares aside. Please contact Sue on woodbugs23@gmail.com or 01798 870 461 for more details.

For Rules and Guidance Notes see website www.westsussexbeekeepers.org.uk/auction.html

West Sussex Beekeepers Association V. 2Mar22

BOOK NOW!



Spring 2022 Convention

Friday 8 - Saturday 9 – Sunday 10 April 2022

Harper Adams University, Shropshire, TF10 8NB

Lectures, Workshops and Seminars covering a wide range of practical and scientific topics, directed at all levels of experience, presented by leading experts. Bumper Trade Show Saturday 9th

Speakers and Tutors include; Marin Anastasov, Mark Barnett, Shirley and Richard Bond, Norman Carreck, Lars Chittka, Celia Davis, Joyce Nisbet, Juliet Osborne, Julian Parker, Sara Robb, Nigel Semmence, Jo Widdicombe, Geraldine Wright, and more...

For further information, **and to book**

see the Spring Convention pages at www.bbka.org.uk

To navigate directly to the Spring Convention page on the BBKA website [Click Here](http://www.bbka.org.uk)



NOTICES

BBKA News Editor Vacancy



The BBKA is seeking a new editor for *BBKA News*. After doing a superb job for thirty years as our editor, Sharon Blake has decided to pass the magazine on to someone else. *BBKA News* is expected to provide a wide range of content suitable to meet the needs of beekeepers who will have a range of experience. The editor is responsible for the content and production of *BBKA News* and reports to the BBKA editorial team.

We anticipate the editor will be an active and experienced beekeeper with a sound knowledge of beekeeping practice and beekeeping policies. The role involves generating ideas for articles in line with BBKA policy; commissioning and obtaining these in a timely manner according to the publication schedule; liaising with authors and the production team and evaluating the proofs. The production schedule is set and agreed with the editorial team, printers and distributors and the editor will need to be comfortable working as part of a team. Relevant editorial experience is essential, as is a good eye for detail. Applicants should be confident that they can fulfil these requirements.

Interested applicants are invited to submit a curriculum vita and a minimum of two references. Interviewed applicants will also be asked to pitch their ideas on how they see the development of *BBKA News* going forward. This position is on a self-employed contract basis, terms of which will be negotiated.

If you think you can take on the role and are interested in receiving further details on the job description and remuneration package or wish to apply, please contact Leigh Sidaway, General Manager at gen.manager@bbka.org.uk or by phone 02476 696679 Ext 2005.

Closing date for applications is 20th May and interviews will be held at the BBKA office, Stoneleigh, Wednesday 8th June.

Regards

Stephen Barnes, BBKA Chair



RESOURCES – Yolanda Noye

PROGRAMMES – DOCUMENTARIES – FILMS – PUBLICATIONS – MUSIC – POETRY (and more)

I am introducing a new page to The Buzz to share any information/resources that members have found useful and/or enjoyable. If you have watched an interesting programme, know of one coming up or read a particularly useful publication do please let me know by emailing newsletter@centralsussexbka.org.uk or messaging me on 07775 841535.

I will start if off (!)

TV

Sky Nature HD (Chanel 124) – Sunday 20th March 8pm: My Garden of a Thousand Bees. *Taking refuge from the pandemic, a wildlife filmmaker sets out to film over 60 species of bee in his small garden.*

Sky Nature HD (Chanel 124) – Sunday 20th March 8.30pm: A Bee's Diary. *Follow the trials and tribulations of two honey bees over two years from birth to death.*

Publications (As recently shared on our CS Bees Knees WhatsApp Group)

- The BBKA Guide to Beekeeping
- Honeybee Democracy: Thomas D Seeley
- Buzzing with Ideas: Don Honey
- The Complete Step by Step Book of Beekeeping: Jenni Fleetwood
- Guide to Bees & Honey: Ted Hooper
- The Bee Book: Fergus Chadwick
- The Bee Manual: Claire Waring

Music (shared by Andy Hibberd)

Loudoun Wainwright III – B Side

It's wonderful to be alive
To be a bee in this beehive
It's tough as nails, it's smooth as silk
It's milk and honey, without milk

I work with flowers, it's my work
From this, there's no way that I can shirk
No-no-no-no-no, there is no complex philosophy
It's just because I'm a bee

Unlike the skunk, I do not smell
But I have a thing and it stings like hell
As heroes go, I'm unsung
But step on me and you'll get stung
You'll get stung

The cutest bee I've ever seen
Is our own big, fat sexy queen
It's true she hasn't got such great legs
But you should see the girl lay eggs

It's wonderful to be a bee
Although there are billions just like me
This hive of mine, I call it home
There is no place like comb sweet comb

